



Week 1 & Week 2 Forecast for the Philippines using GEFS Model



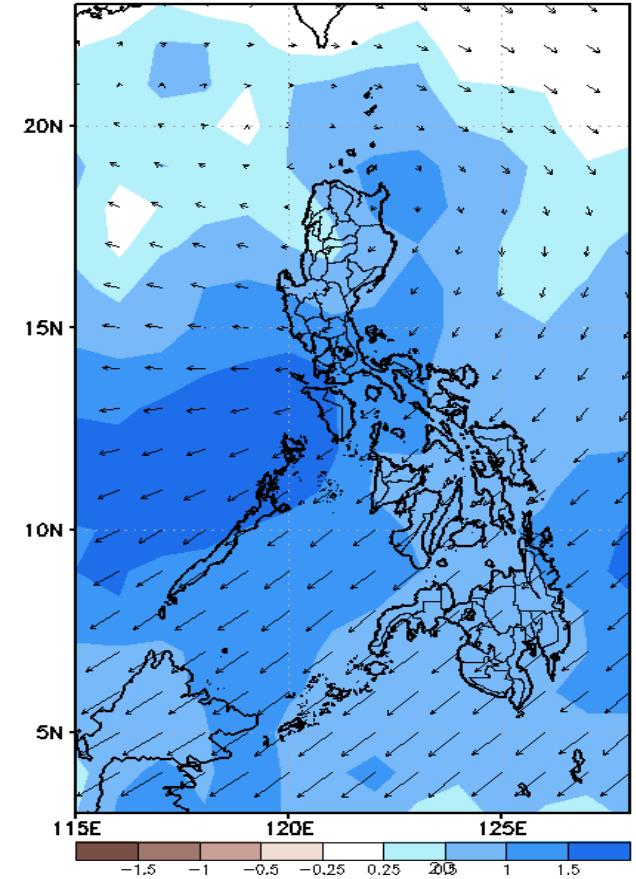
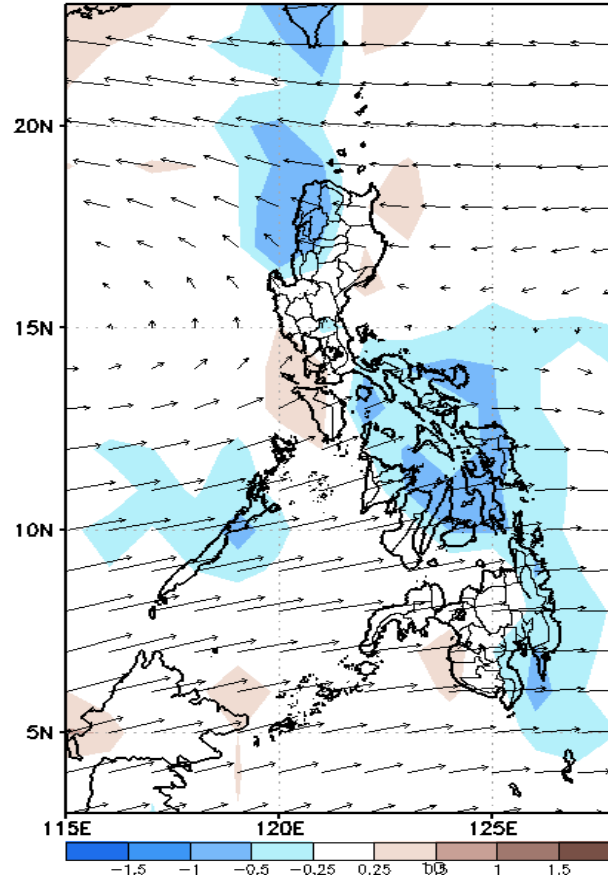
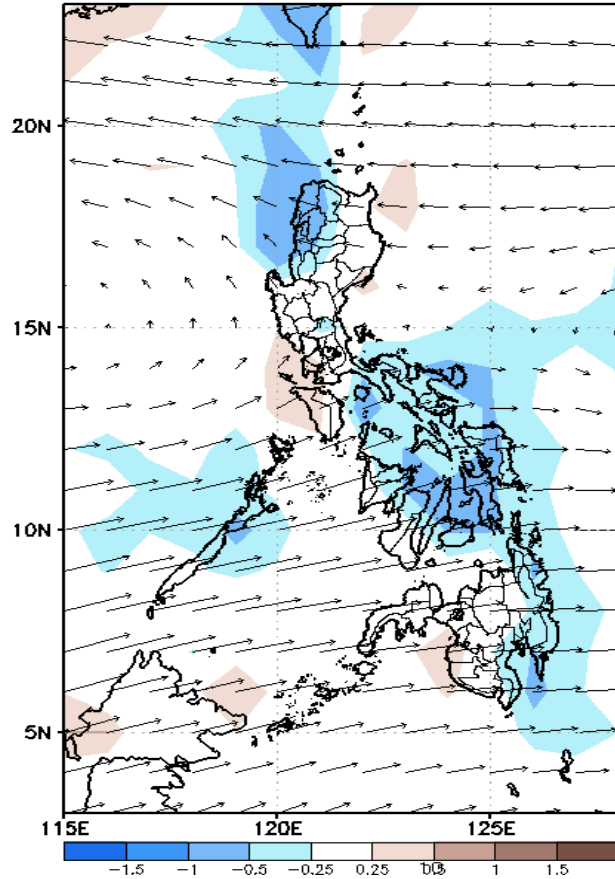
GEFS Week-1 Forecasts: Divergence & Wind Anomaly

Week 1: Oct 04-10, 2021

GEFS Week-1 850-hPa Divergence and Wind Anomaly
Valid: 20211004 - 20211010

GEFS Week-1 700-hPa Divergence and Wind Anomaly
Valid: 20211004 - 20211010

GEFS Week-1 200-hPa Divergence and Wind Anomaly
Valid: 20211004 - 20211010



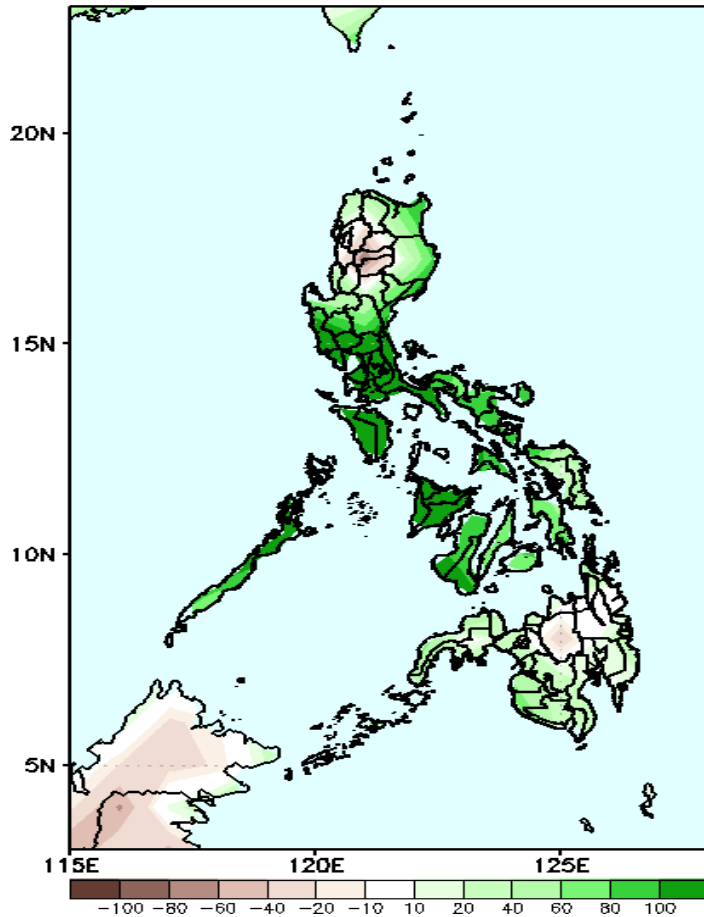
Upper and low level Divergence suggest likelihood of light to moderate precipitation in most parts of the country. Southwest Monsoon affecting western sections of Luzon and Visayas while Easterlies affecting the rest of the country attributing to light to moderate rains due to thunderstorms during the forecast period.



Precipitation Anomaly and Exceedance Probability > 25/50 mm

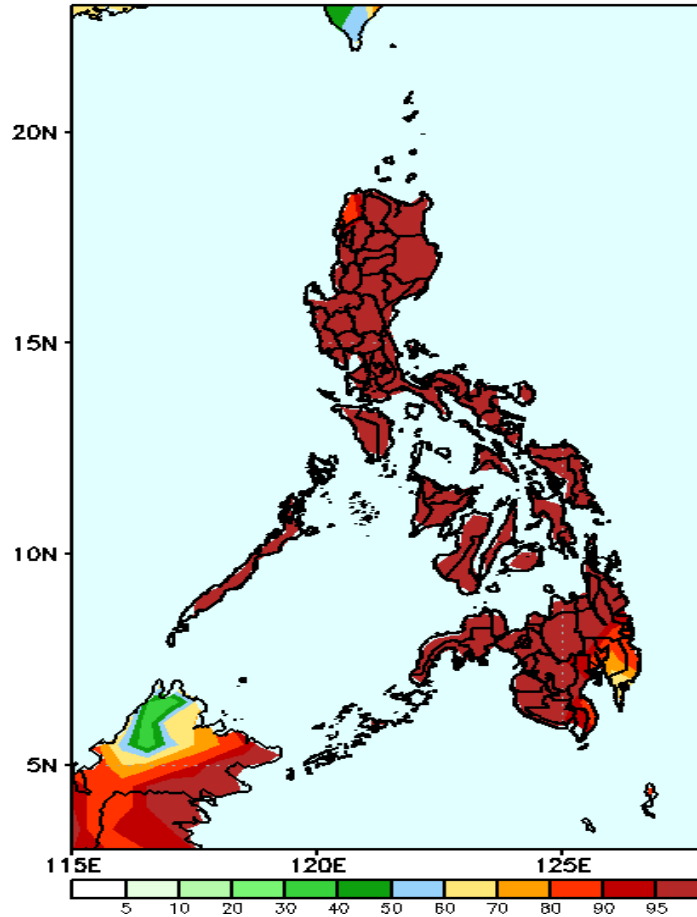
Week 1: Oct 04-10, 2021

GEFS Week-1 Precip Anomaly
Valid: 20211004 - 20211010



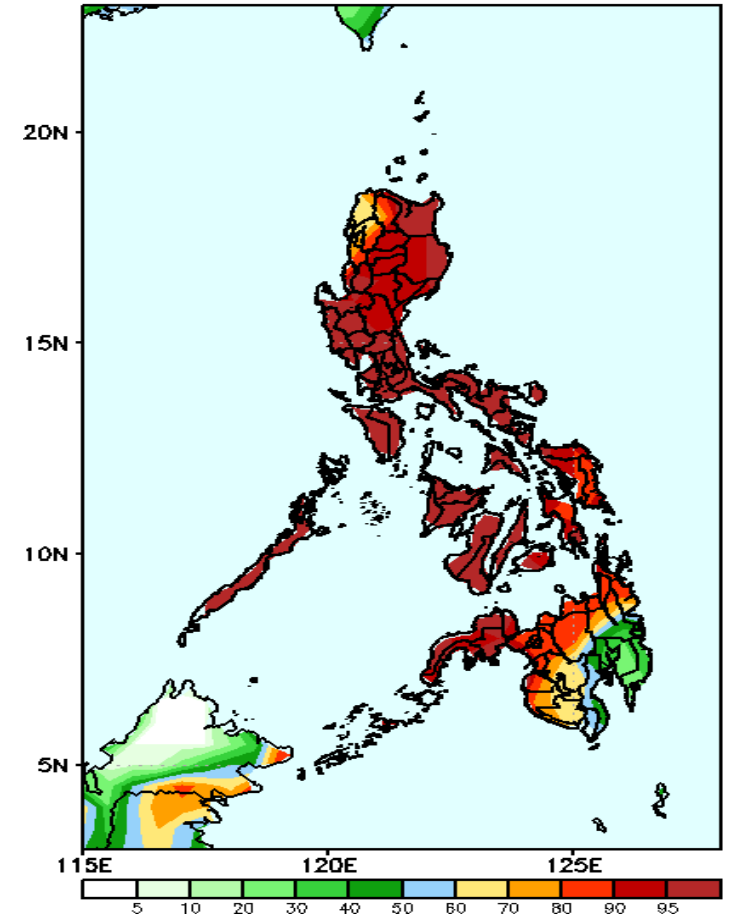
Increase of rainfall 40-150 is expected in most parts of the country (specially in Luzon and Visayas) except in Cordillera Region and Northern Mindanao during the forecast period.

GEFS Week-1 Exceedance Prob. > 25mm
Valid: 20211004 - 20211010



High probability of rainfall to exceed 25mm in most parts of the country during the forecast period.

GEFS Week-1 Exceedance Prob. > 50mm
Valid: 20211004 - 20211010



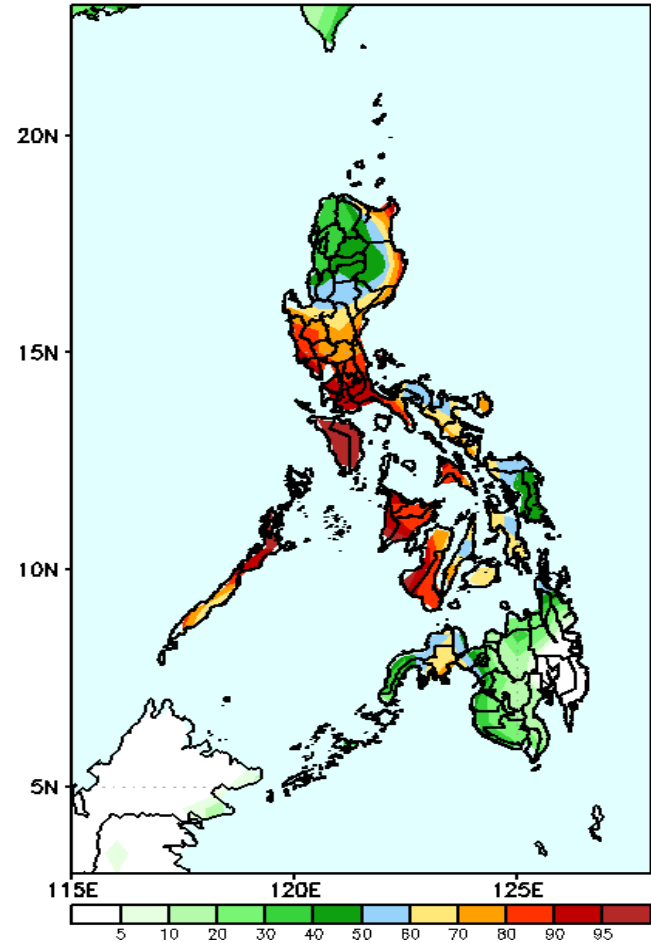
High probability of rainfall to exceed 50mm in most parts of the country except in Davao Region during the forecast period.



Exceedance Probability > 100/150/200 mm

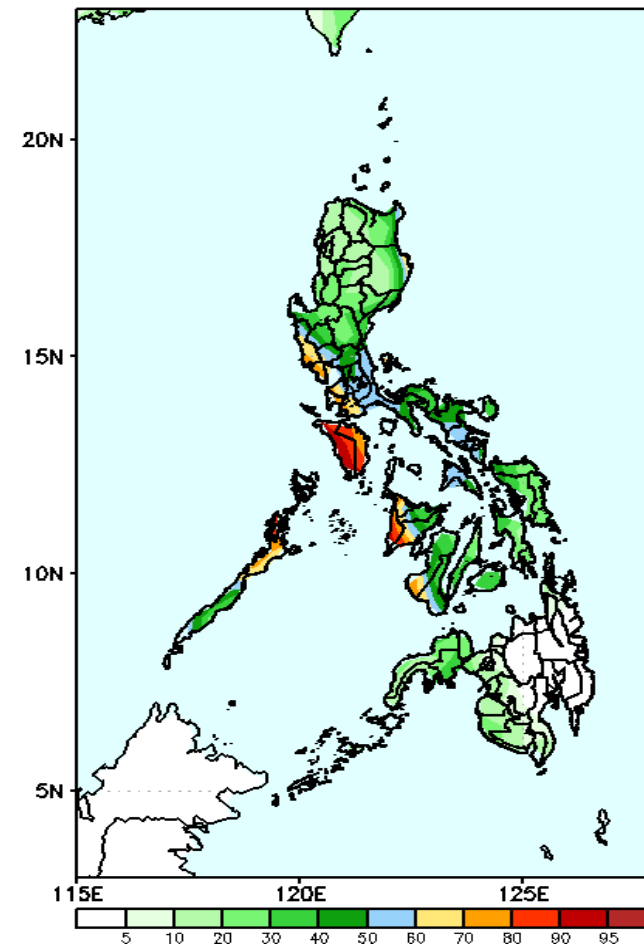
Week 1: Oct 04-10, 2021

GEFS Week-1 Exceedance Prob. > 100mm
Valid: 20211004 - 20211010



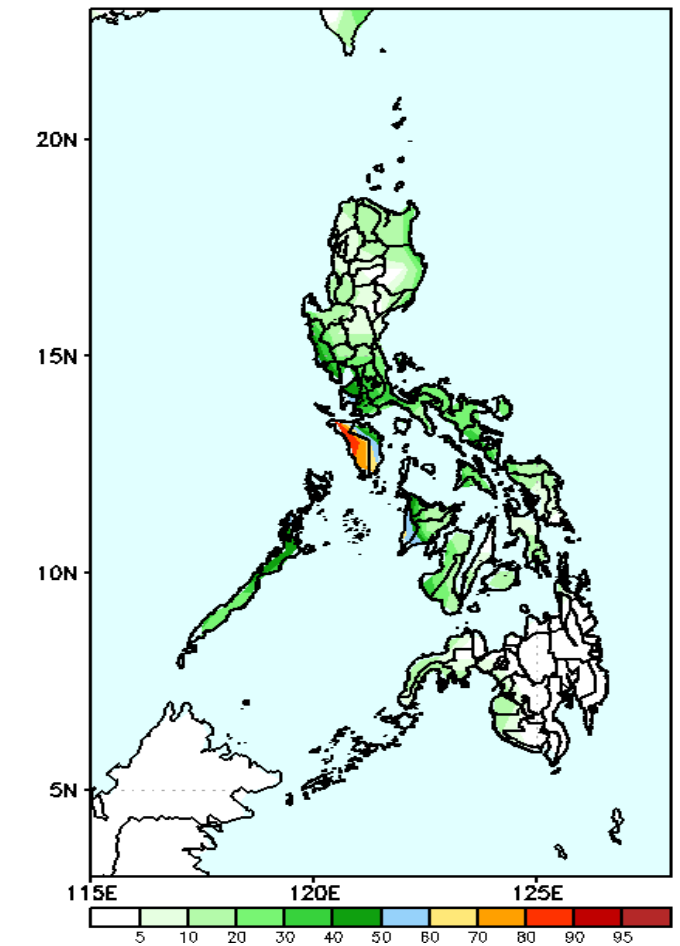
High probability of rainfall to exceed 100mm in eastern Cagayan & Isabela, in most parts of Central & Southern Luzon and most parts of Central and Western Visayas during the forecast period.

GEFS Week-1 Exceedance Prob. > 150mm
Valid: 20211004 - 20211010



Less probability of rainfall to exceed 150mm in most parts of the country is expected except in Mindoro & western Panay during the forecast period.

GEFS Week-1 Exceedance Prob. > 200mm
Valid: 20211004 - 20211010



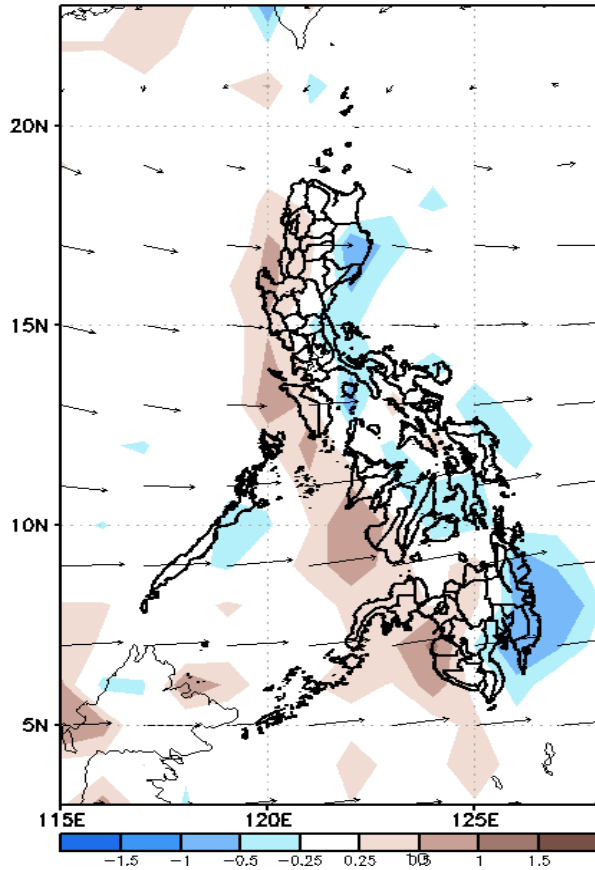
Less probability of rainfall to exceed 200mm in most parts of the country is expected except in Occidental Mindoro during the forecast period.



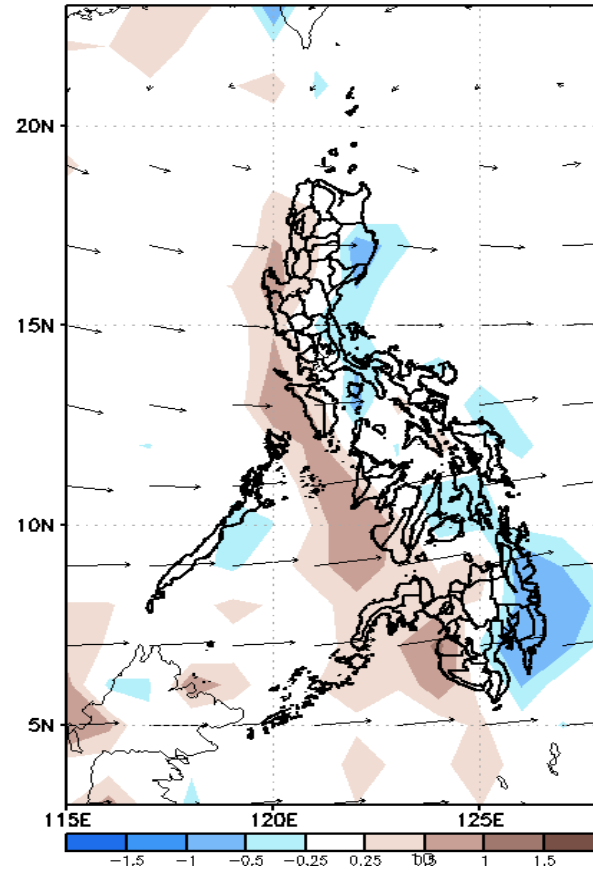
GEFS Week-2 Forecasts: Divergence & Wind Anomaly

Week 2: Oct 11-17, 2021

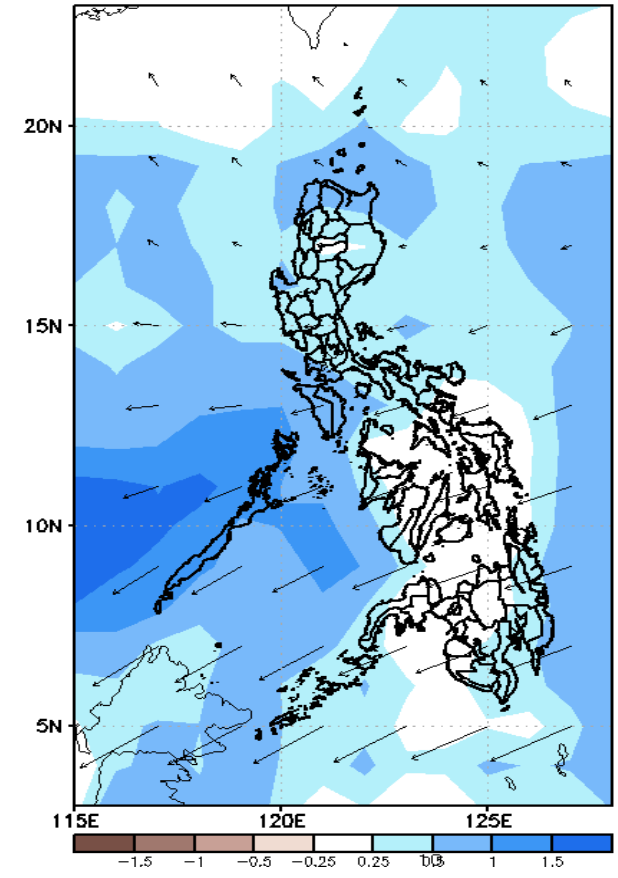
GEFS Week-2 850-hPa Divergence and Wind Anomaly
Valid: 20211011 - 20211017



GEFS Week-2 700-hPa Divergence and Wind Anomaly
Valid: 20211011 - 20211017



GEFS week-2 200-hPa Divergence and Wind Anomaly
Valid: 20211011 - 20211017

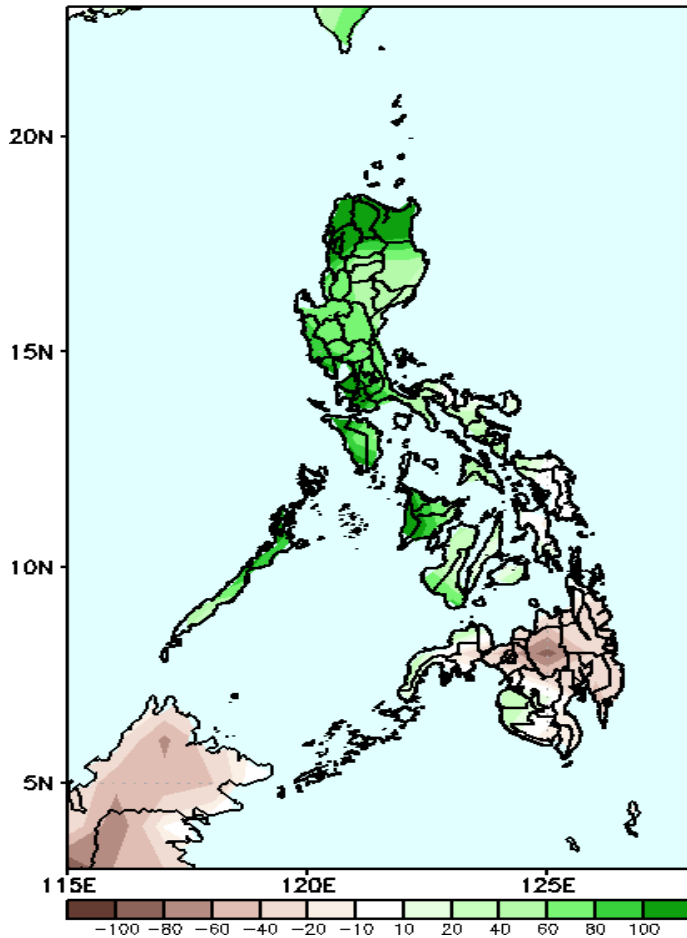


Upper and low level Divergence suggest likelihood of light precipitation in most parts of the country. Southwest Monsoon affecting the western sections of the country while Easterlies affecting the rest of the country attributing to light to moderate rains due to thunderstorms during the forecast period.

Precipitation Anomaly and Exceedance Probability > 25/50 mm

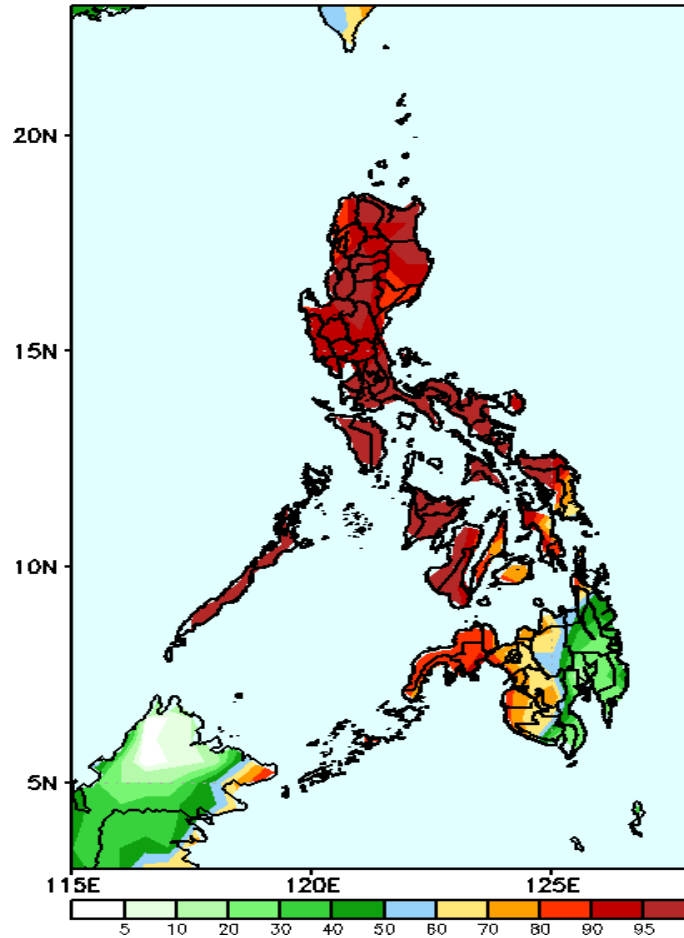
Week 2: Oct 11-17, 2021

GEFS Week-2 Precip Anomaly
Valid: 20211011 - 20211017



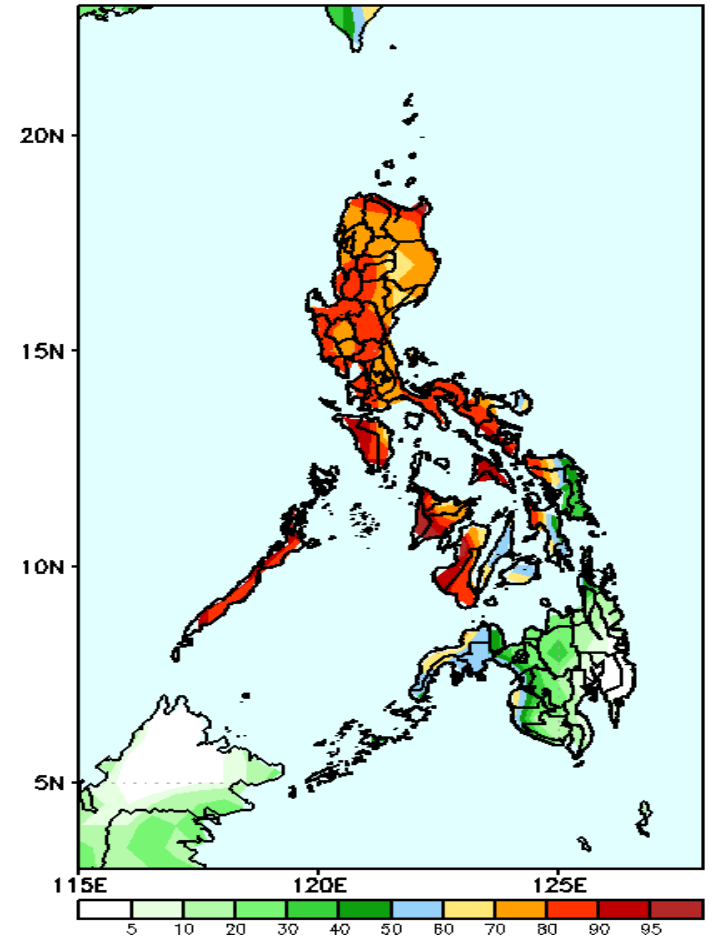
Increase of rainfall 40-150mm is expected in most parts Luzon and Visayas while rainfall deficit of 40-80mm in Mindanao during the forecast period.

GEFS Week-2 Exceedance Prob. > 25mm
Valid: 20211011 - 20211017



High probability of rainfall to exceed 25mm in most parts of the country except in the eastern parts of Mindanao during the forecast period

GEFS Week-2 Exceedance Prob. > 50mm
Valid: 20211011 - 20211017

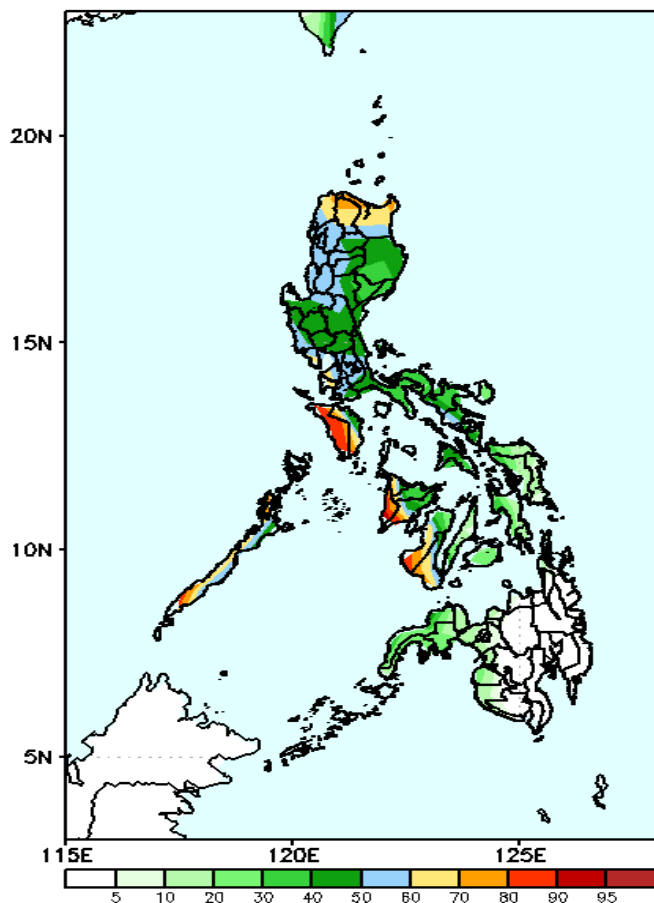


High probability of rainfall to exceed 50mm in most parts of Luzon & Visayas while less likely in Mindanao during the forecast period.

Exceedance Probability > 100/150/200 mm

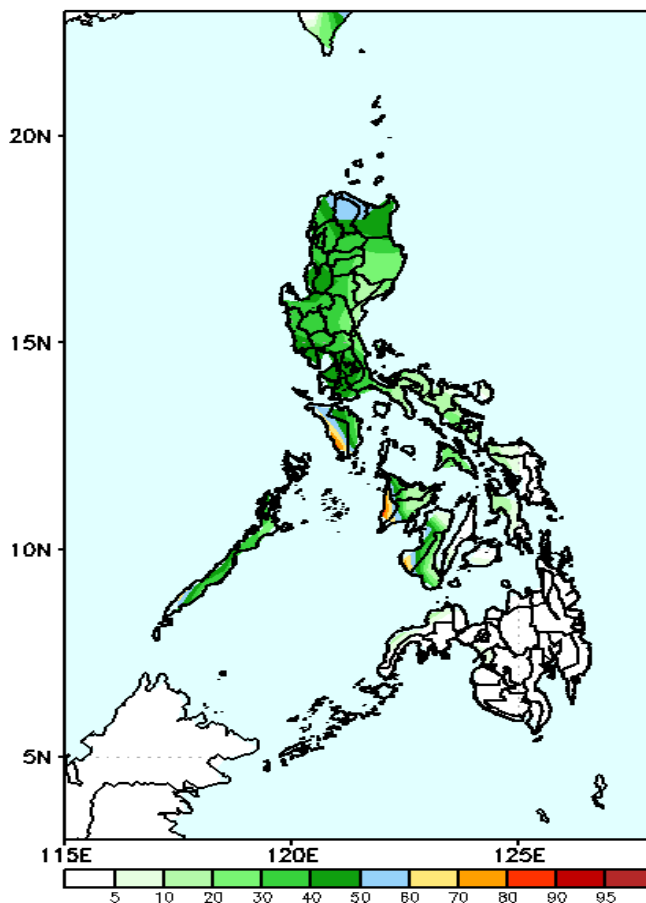
Week 2: Oct 11-17, 2021

GEFS Week-2 Exceedance Prob. > 100mm
Valid: 20211011 - 20211017



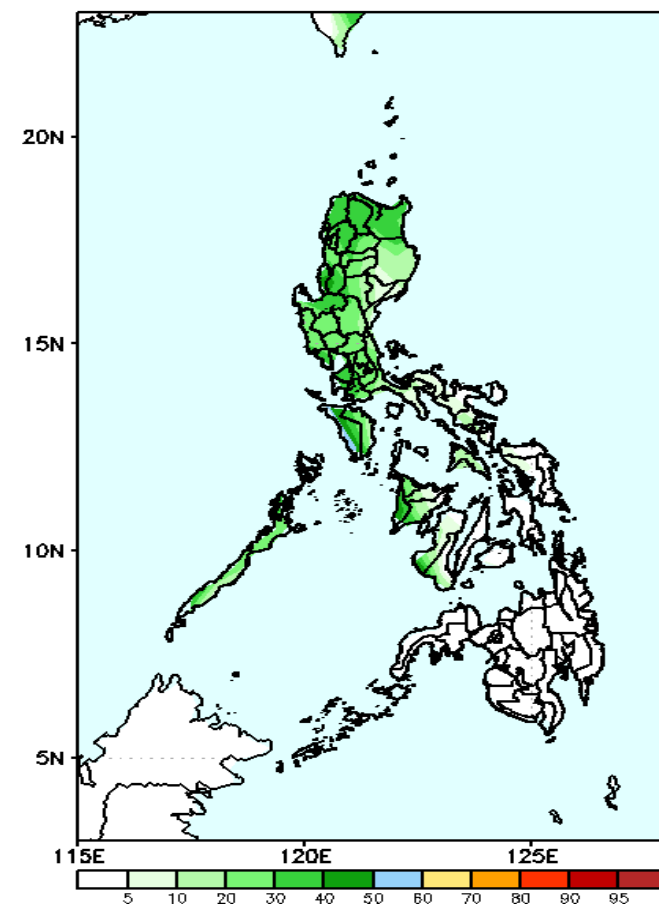
Less probability of rainfall to exceed 100mm in most parts of the country is expected except in Occ. Mindoro, southern Palawan and western parts of Panay & Negros Island during the forecast period.

GEFS Week-2 Exceedance Prob. > 150mm
Valid: 20211011 - 20211017



Less probability of rainfall to exceed 150mm in most parts of the country is expected during the forecast period.

GEFS Week-2 Exceedance Prob. > 200mm
Valid: 20211011 - 20211017

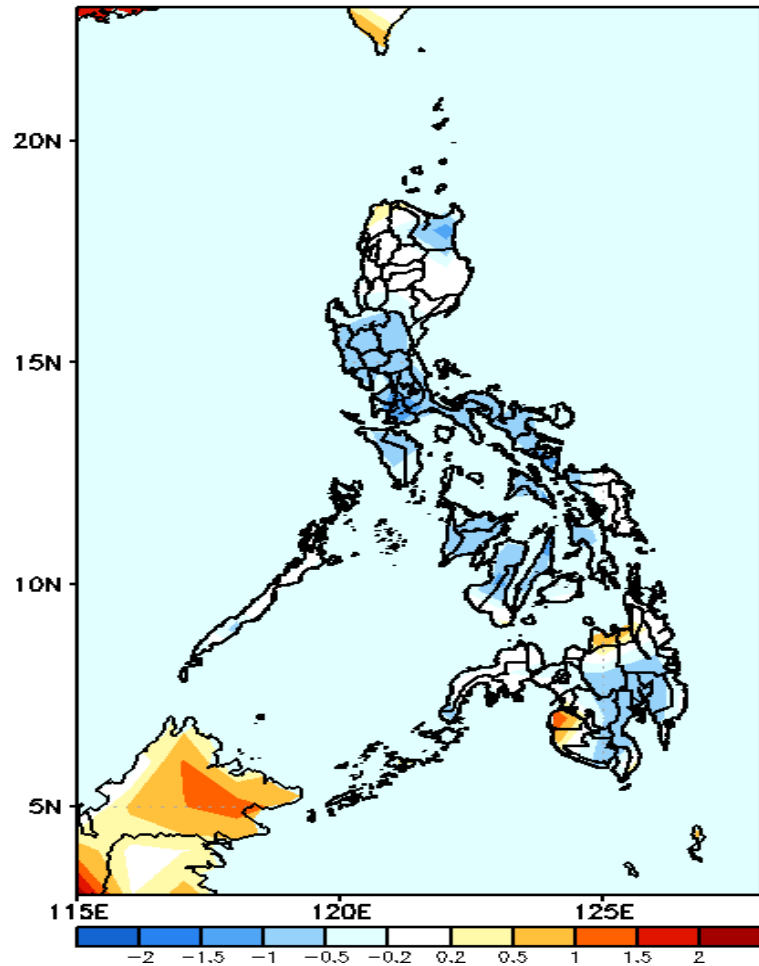


Less probability of rainfall to exceed 200mm in most parts of the country is expected during the forecast period.



GEFS Week-1 & 2 Forecasts: T2m Anomaly

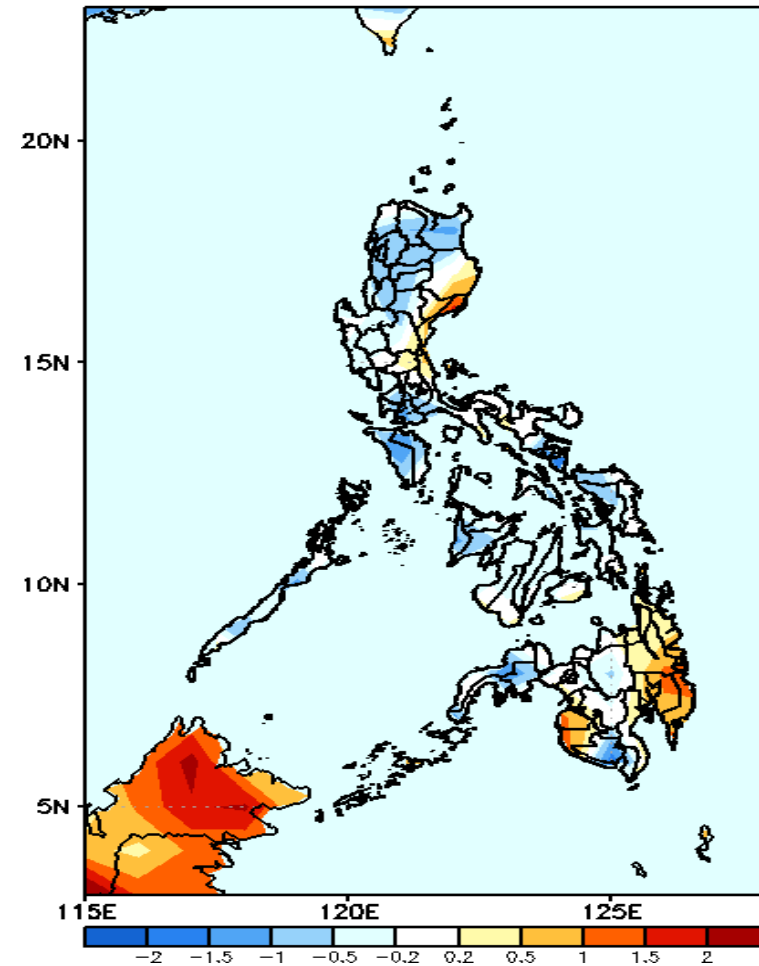
GEFS Week-1 T2m Anomaly
Valid: 20211004 - 20211010



2m Temperature Week 1: Oct 04-10, 2021

Average to slightly cooler than average surface air temperature will likely experience in most parts of the country is expected except in Misamis Oriental, Maguindanao & Sultan Kudarat where slightly warmer than average temperature is expected.

GEFS Week-2 T2m Anomaly
Valid: 20211011 - 20211017



2m Temperature Week 2: Oct 11-17, 2021

Average to slightly cooler than average surface air temperature will likely experience in most parts of the country except in eastern Isabela, Aurora, Maguindanao, Sultan Kudarat and eastern Mindanao where slightly warmer to warmer than average temperature is expected.